

**ACTR2 Antibody (C-term)**  
**Purified Rabbit Polyclonal Antibody (Pab)**  
**Catalog # AP6533B****Specification**

---

**ACTR2 Antibody (C-term) - Product Information**

|                   |  |
|-------------------|--|
| Application       | IHC-P, FC, WB,E  |
| Primary Accession | <a href="#">P61160</a>   |
| Other Accession   | <a href="#">Q5M7U6</a> , <a href="#">P61161</a> , <a href="#">P53488</a> , <a href="#">A7MB62</a> , <a href="#">Q7ZXV3</a> ,<br><a href="#">Q56A35</a> , <a href="#">Q7ZTP2</a> , <a href="#">Q7SXW6</a> |
| Reactivity        | Human  |
| Predicted         | Zebrafish, Xenopus, Bovine, Chicken,<br>Mouse, Rat   |
| Host              | Rabbit   |
| Clonality         | Polyclonal   |
| Isotype           | Rabbit IgG   |
| Antigen Region    | 323-352  |

**ACTR2 Antibody (C-term) - Additional Information****Gene ID** 10097**Other Names**

Actin-related protein 2, Actin-like protein 2, ACTR2, ARP2

**Target/Specificity**

This ACTR2 antibody is generated from rabbits immunized with a KLH conjugated synthetic peptide between 323-352 amino acids from the C-terminal region of human ACTR2.

**Dilution**

IHC-P~~1:50~100

FC~~1:10~50

WB~~1:1000

E~~Use at an assay dependent concentration.

**Format**

Purified polyclonal antibody supplied in PBS with 0.09% (W/V) sodium azide. This antibody is prepared by Saturated Ammonium Sulfate (SAS) precipitation followed by dialysis against PBS.

**Storage**

Maintain refrigerated at 2-8°C for up to 2 weeks. For long term storage store at -20°C in small aliquots to prevent freeze-thaw cycles.

**Precautions**

ACTR2 Antibody (C-term) is for research use only and not for use in diagnostic or therapeutic procedures.

**ACTR2 Antibody (C-term) - Protein Information**

**Name** ACTR2

**Synonyms** ARP2

**Function** ATP-binding component of the Arp2/3 complex, a multiprotein complex that mediates actin polymerization upon stimulation by nucleation-promoting factor (NPF) (PubMed:[9000076](#)). The Arp2/3 complex mediates the formation of branched actin networks in the cytoplasm, providing the force for cell motility (PubMed:[9000076](#)). Seems to contact the pointed end of the daughter actin filament (PubMed:[9000076](#)). In podocytes, required for the formation of lamellipodia downstream of AVIL and PLCE1 regulation (PubMed:[29058690](#)). In addition to its role in the cytoplasmic cytoskeleton, the Arp2/3 complex also promotes actin polymerization in the nucleus, thereby regulating gene transcription and repair of damaged DNA (PubMed:[17220302](#), PubMed:[29925947](#)). The Arp2/3 complex promotes homologous recombination (HR) repair in response to DNA damage by promoting nuclear actin polymerization, leading to drive motility of double-strand breaks (DSBs) (PubMed:[29925947](#)).

**Cellular Location**

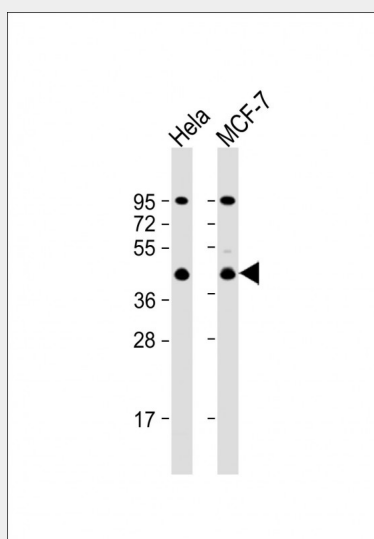
Cytoplasm, cytoskeleton. Cell projection. Nucleus

**ACTR2 Antibody (C-term) - Protocols**

Provided below are standard protocols that you may find useful for product applications.

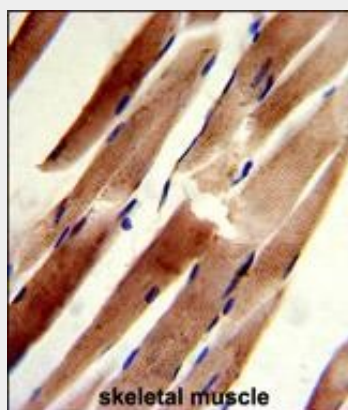
- [Western Blot](#)
- [Blocking Peptides](#)
- [Dot Blot](#)
- [Immunohistochemistry](#)
- [Immunofluorescence](#)
- [Immunoprecipitation](#)
- [Flow Cytometry](#)
- [Cell Culture](#)

**ACTR2 Antibody (C-term) - Images**

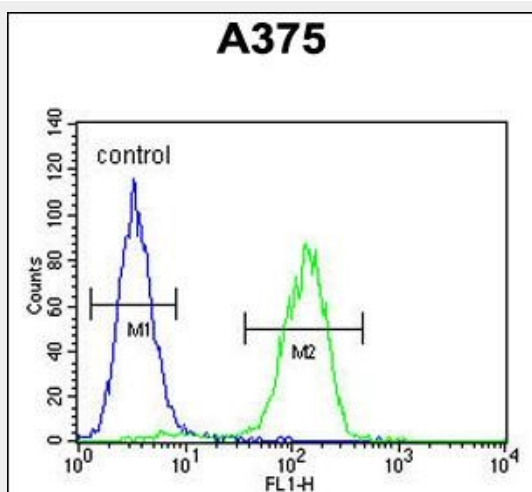


All lanes : Anti-ACTR2 Antibody (C-term) at 1:1000 dilution Lane 1: HeLa whole cell lysate Lane 2: MCF-7 whole cell lysate Lysates/proteins at 20 µg per lane. Secondary Goat Anti-Rabbit IgG, (H+L), Peroxidase conjugated at 1/10000 dilution. Predicted band size : 45 kDa Blocking/Dilution

buffer: 5% NFDM/TBST.



Formalin-fixed and paraffin-embedded human skeletal muscle reacted with ACTR2 Antibody (C-term), which was peroxidase-conjugated to the secondary antibody, followed by DAB staining. This data demonstrates the use of this antibody for immunohistochemistry; clinical relevance has not been evaluated.



ACTR2 Antibody (C-term) (Cat. #AP6533b) flow cytometric analysis of A375 cells (right histogram) compared to a negative control cell (left histogram). FITC-conjugated goat-anti-rabbit secondary antibodies were used for the analysis.

#### **ACTR2 Antibody (C-term) - Background**

ACTR2 is known to be a major constituent of the ARP2/3 complex. This complex is located at the cell surface and is essential to cell shape and motility through lamellipodial actin assembly and protrusion.

#### **ACTR2 Antibody (C-term) - References**

Gonzalez,V., Cell Host Microbe 5 (3), 259-272 (2009)  
Weisswange,I., Nature 458 (7234), 87-91 (2009)